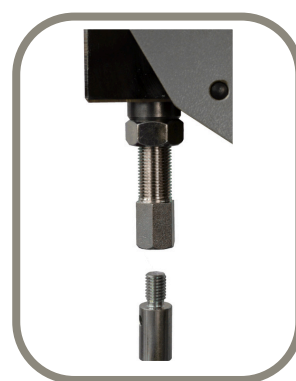


LEVER PRESS FOR HEAVY DUTY WORKS

Professional solution for the application of small parts and die-cutting



- Application of snap-buttons, eyelets and small metal or plastic fittings, die-cutting
- Ideal for fabrics, leather, plastic sheeting and cardboard
- Manual operation with a reversible lever (front or rear pull) to suit any workstation
- Can be mounted in a cantilevered position
- Compatible with standard dies supplied by button manufacturers



TECHNICAL SPECIFICATIONS S80

Product description	lever press with toggle mechanism ,to be fixed to workbench
Maximum force developed	900 kg
Stroke	35 mm
Throat depth	125 mm
Light	80/105 mm
Technical specifications of the upper tool holder	M10 thread and ¼-inch 24-thread
Technical specifications of the lower tool holder	diam.12,2 mm
Estimated processing time	3-4 sec
Materials that can be worked	iron, brass, aluminium, steel, plastic
Maximum diameter of small components that can be processed	62 mm
Standard equipment	open-ended spanner
Customisation	we can manufacture custom-designed tool holders on request
Suitable setting tools	compatible with standard button-dies supplied by button manufacturers
Mounting methods	using screws and nuts suitable for the mounting surface (not supplied) Can be mounted in a cantilevered position by moving the front foot back
Warranty	12 months

DIMENSIONS AND LOGISTICS

Dimensions WxLxH	Net weight	packaging dimensions	Gross weight	Type of packaging
12X29X85 cm	16,4 kg	40X40X20 cm	17,2 kg	Cardboard box