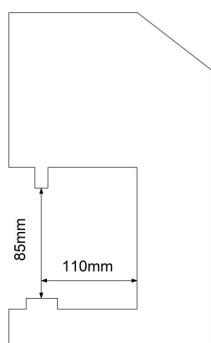
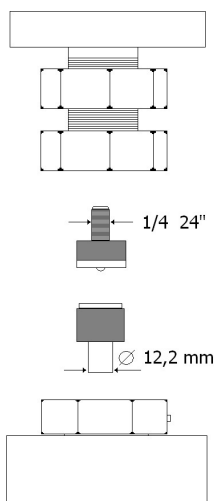


# MOD.GS/S-RC DATA SHEET

METALMECCANICA



## TECHNICAL SPECIFICATIONS OF TOOL HOLDERS



The dies (tools) for small parts can be purchased from the button supplier.

Possibility to have custom tool holders.

\*a standard jeans button was taken as reference

The force required for the application is mentioned in the technical data sheet of the small parts.

## PRODUCT DESCRIPTION

### USE

Pneumatic press with one head and manual loading.

### TYPE OF START-UP

Application of snap buttons, eyelets and small parts in general.

Holes in fabrics, leather and plastic

### CYLINDER

Pneumatic pedal

### STROKE ADJUSTMENT RANGE

ISO Ø 100 with stroke adjustment

### CYLINDER FORCE

1÷20 mm

### AIR CONSUMPTION PER CYCLE

520 Kg - 8bar

### APPLICABLE SMALL PARTS SIZE\*

2,75 N/l

### WORKING PRESSURE

Ø max 24 mm

### TYPE OF ADJUSTMENT

Adjustable 3÷8 bar

### PROCESSING TIME

Pressure reducer with pressure gauge

### SAFETY

3÷4 " per cycle

### STANDARD EQUIPMENT

Adjustable hand protection system

### OPTIONALS

4 feet - 1 button tray - 1 double-ended wrench - 1 centering device - one 3 mm Allen wrench

- Red light led positioning device
- Distance reference guide
- Tool holder panel
- Approach device
- Pneumatic timer
- Custom-made top

### NUMBER OF OPERATORS PER MACHINE

1

### CERTIFICATION

CE Labeling

### WARRANTY DURATION

12 months

### OPERATING AREA HEIGHT

92 ÷ 102 cm

### BENCH HEIGHT ADJUSTMENT

Yes

### MACHINE DIMENSIONS

L53xP56xH150÷160 cm

### NET WEIGHT

45 kg

### PACKAGING MODE

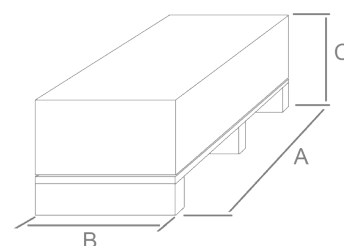
Support disassembled

### STANDARD PACKAGING TYPE

Boxes on pallet

### PACKAGING SIZE

A= 90 cm B = 45 cm C= 64 cm



### GROSS WEIGHT

54 Kg