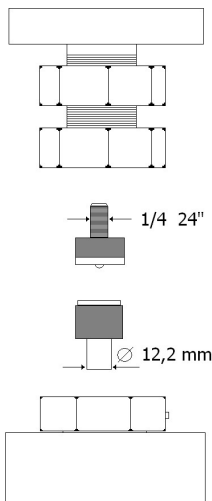


TECHNICAL SPECIFICATIONS OF TOOL HOLDERS



The dies (tools) for small parts can be purchased from the button supplier.

Possibility to have custom tool holders.

*a standard jeans button was taken as reference

The force required for the application is mentioned in the technical data sheet of the small parts.

PRODUCT DESCRIPTION

Pneumatic press with two heads and manual loading.

USE

Application of snap buttons, eyelets and small parts in general.
Piercing of fabrics, leather and plastic sheets.

TYPE OF START-UP

Mechanical pedal

CYLINDER

ISO $\varnothing 80$

CYLINDER FORCE

350 Kg - 8bar

AIR CONSUMPTION PER CYCLE

1,75 N/l

APPLICABLE SMALL PARTS SIZE*

\varnothing max 15 mm

WORKING PRESSURE

Adjustable 3÷8 bar

TYPE OF ADJUSTMENT

Pressure reducer with pressure gauge

PROCESSING TIME

3÷4 " per cycle

SAFETY

Adjustable hand protection system

STANDARD EQUIPMENT

4 feet - 2 button trays - 1 double-ended wrench

OPTIONALS

- Red light led positioning device
- Distance reference guide
- Suction kit
- Tool holder panel
- Pneumatic timer
- Custom-made top

NUMBER OF OPERATORS PER MACHINE

1

CERTIFICATION

CE Labeling

WARRANTY DURATION

12 months

OPERATING AREA HEIGHT

92 cm

BENCH HEIGHT ADJUSTMENT

no

MACHINE DIMENSIONS

L45xP60xH134 cm

NET WEIGHT

56 kg

PACKAGING MODE

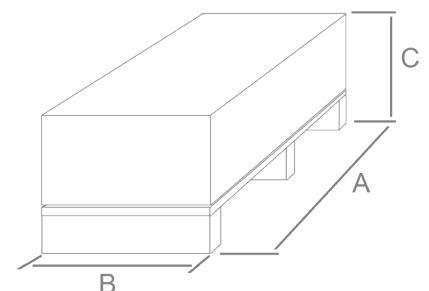
Support disassembled

STANDARD PACKAGING TYPE

Boxes on pallet

PACKAGING SIZE

A= 89 cm B = 49 cm C= 31 cm



GROSS WEIGHT

58 Kg