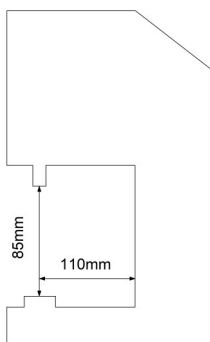
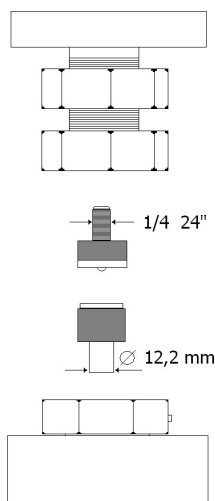


# MODEL GS/D-DC DATA SHEET



## TECHNICAL SPECIFICATIONS OF TOOL HOLDERS



The dies (tools) for small parts can be purchased from the button supplier.

Possibility to have custom tool holders.

\*VL80 eyelet (for 20") and VL150 eyelet (for 30") were used as reference.

The force required for the application is mentioned in the technical data sheet of the small parts.

## PRODUCT DESCRIPTION

### USE

Pneumatic press with two heads and manual loading.

Application of snap buttons, eyelets and small parts in general.

Piercing of fabrics, leather and plastic sheets.

### TYPE OF START-UP

Pneumatic pedal

### CYLINDER

20" membrane

30" membrane

### CYLINDER FORCE

900 Kg - 8bar

1500 kg - 8bar

### AIR CONSUMPTION PER CYCLE

5,5 N/l per head-8 bar

9 N/l per head-8bar

### APPLICABLE SMALL PARTS SIZE\*

Ø max 30 mm

Ø max 50 mm

### HEAD SPACING

310 mm

### WORKING PRESSURE

Adjustable 3÷8 bar

### TYPE OF ADJUSTMENT

Pressure reducer with pressure gauge

### PROCESSING TIME

3÷4 " per cycle

### SAFETY

Adjustable hand protection system

### STANDARD EQUIPMENT

4 feet - 2 button trays - 1 double-ended wrench - 1 centering device - one 3 mm Allen wrench

### OPTIONALS

- Red light led positioning device
- Distance reference guide
- Suction kit
- Tool holder panel
- Approach device
- Pneumatic timer
- Custom-made top

1

### NUMBER OF OPERATORS PER MACHINE

### CERTIFICATION

CE Labeling

### WARRANTY DURATION

12 months

### OPERATING AREA HEIGHT

92 ÷ 102 cm

### BENCH HEIGHT ADJUSTMENT

Yes

### MACHINE DIMENSIONS

70x56x158÷168 cm

70x56x160÷170 cm

### NET WEIGHT

71 kg

73 kg

### PACKAGING MODE

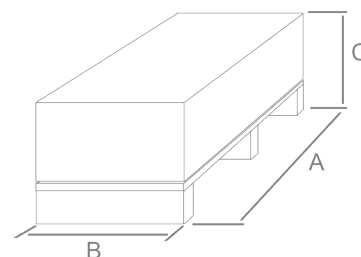
Support disassembled

### STANDARD PACKAGING TYPE

Boxes on pallet

### PACKAGING SIZE

A= 90 cm B = 45 cm C= 84 cm



### GROSS WEIGHT

81 kg

83 kg