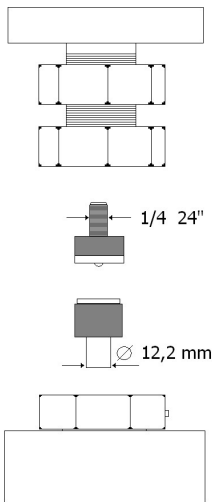


### TECHNICAL SPECIFICATIONS OF TOOL HOLDERS



The dies (tools) for small parts can be purchased from the button supplier.

Possibility to have custom tool holders.

\*VL80 eyelet (for 20") and VL150 eyelet (for 30") were used as reference.

The force required for the application is mentioned in the technical data sheet of the small parts.

### PRODUCT DESCRIPTION

Pneumatic press with one head and manual loading.

### USE

Application of snap buttons, eyelets and small parts in general.

Piercing of fabrics, leather and plastic sheets.

### TYPE OF START-UP

Pneumatic pedal

### CYLINDER

20" membrane	30" membrane
--------------	--------------

### CYLINDER FORCE

900 Kg - 8bar	1500 kg - 8 bar
---------------	-----------------

### AIR CONSUMPTION PER CYCLE

5,5 N/l a 8 bar	9,0 N/l at 8 bar
-----------------	------------------

### APPLICABLE SMALL PARTS SIZE\*

Ø max 30 mm	Ø max 50 mm
-------------	-------------

### WORKING PRESSURE

Adjustable 3÷8 bar

### TYPE OF ADJUSTMENT

Pressure reducer with pressure gauge

### PROCESSING TIME

3÷4 " per cycle

### SAFETY

Adjustable hand protection system

### STANDARD EQUIPMENT

4 feet - 1 button tray - 1 double-ended wrench - 1 centering device - one 3 mm Allen wrench

### OPTIONALS

- Red light led positioning device
- Distance reference guide
- Suction kit
- Tool holder panel
- Approach device
- Pneumatic timer
- Custom-made top

### NUMBER OF OPERATORS PER

1

### MACHINE

### CERTIFICATION

CE Labeling

### WARRANTY DURATION

12 months

### OPERATING AREA HEIGHT

92 ÷ 102 cm

### BENCH HEIGHT ADJUSTMENT

Yes

### MACHINE DIMENSIONS

L53xP56xH158÷168 cm	L53xP56xH160÷170 cm
---------------------	---------------------

### NET WEIGHT

49 kg	50 Kg
-------	-------

### PACKAGING MODE

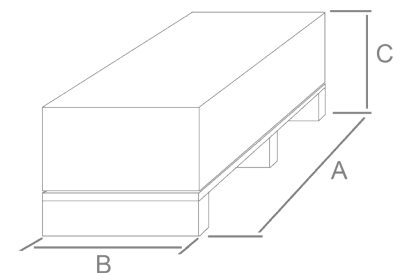
Support disassembled

### STANDARD PACKAGING TYPE

Boxes on pallet

### PACKAGING SIZE

A= 90 cm B = 45 cm C= 84 cm



### GROSS WEIGHT

59 Kg	60 kg
-------	-------