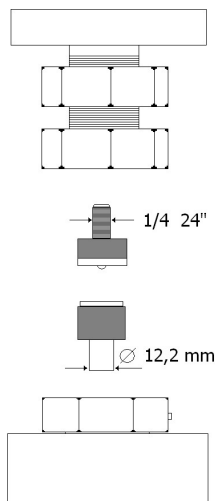


TECHNICAL SPECIFICATIONS OF TOOL HOLDERS



The dies (tools) for small parts can be purchased from the button supplier.

Possibility to have custom tool holders.

*a standard jeans button was taken as reference

The force required for the application is mentioned in the technical data sheet of the small parts.

PRODUCT DESCRIPTION

USE

Pneumatic press with two heads and manual loading.

Application of snap buttons, eyelets and small parts in general.

Piercing of fabrics, leather and plastic sheets.

TYPE OF START-UP

Pneumatic pedal

CYLINDER

ISO Ø 100

CYLINDER FORCE

520 Kg - 8bar

AIR CONSUMPTION PER CYCLE

2,75 N/l per head

APPLICABLE SMALL PARTS SIZE*

Ø max 24 mm

HEAD SPACING

310 mm

WORKING PRESSURE

Adjustable 3÷8 bar

TYPE OF ADJUSTMENT

Pressure reducer with pressure gauge

PROCESSING TIME

3÷4 " per cycle

SAFETY

Adjustable hand protection system

STANDARD EQUIPMENT

4 feet - 2 button trays - 1 double-ended wrench - 1 centering device - one 3 mm Allen wrench

OPTIONALS

- Red light led positioning device
- Distance reference guide
- Suction kit
- Tool holder panel
- Approach device
- Pneumatic timer
- Custom-made top

NUMBER OF OPERATORS PER MACHINE

1

CERTIFICATION

CE Labeling

WARRANTY DURATION

12 months

OPERATING AREA HEIGHT

92 ÷ 102 cm

BENCH HEIGHT ADJUSTMENT

Yes

MACHINE DIMENSIONS

70x56x150÷160 cm

NET WEIGHT

61 kg

PACKAGING MODE

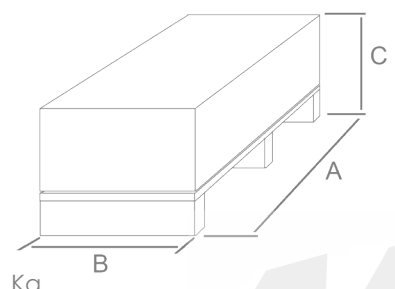
Support disassembled

STANDARD PACKAGING TYPE

Boxes on pallet

PACKAGING SIZE

A= 90 cm B= 45 cm C= 64 cm



GROSS WEIGHT

71 Kg