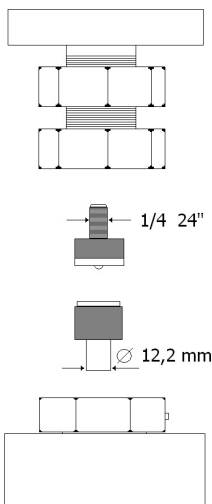


TECHNICAL SPECIFICATIONS OF TOOL HOLDERS



The dies (tools) for small parts can be purchased from the button supplier.

Possibility to have custom tool holders.

*a standard jeans button was taken as reference

The force required for the application is mentioned in the technical data sheet of the small parts.

PRODUCT DESCRIPTION	Pneumatic press with one head and manual loading.
USE	Application of snap buttons, eyelets and small parts in general. Piercing of fabrics, leather and plastic
TYPE OF START-UP	Pneumatic pedal
CYLINDER	ISO Ø 100
CYLINDER FORCE	520 Kg - 8bar
AIR CONSUMPTION PER CYCLE	2,75 N/l
APPLICABLE SMALL PARTS SIZE*	Ø max 24 mm
WORKING PRESSURE	Adjustable 3÷8 bar
TYPE OF ADJUSTMENT	Pressure reducer with pressure gauge
PROCESSING TIME	3÷4 " per cycle
SAFETY	Adjustable hand protection system
STANDARD EQUIPMENT	4 feet - 1 button tray - 1 double-ended wrench - 1 centering device - one 3 mm Allen wrench
OPTIONALS	<ul style="list-style-type: none"> • Red light led positioning device • Distance reference guide • Suction kit • Tool holder panel • Approach device • Pneumatic timer • Custom-made top
CERTIFICATION	CE Labeling
WARRANTY DURATION	12 months
OPERATING AREA HEIGHT	92 ÷102 cm
BENCH HEIGHT ADJUSTMENT	Yes
MACHINE DIMENSIONS	L53xP56xH150÷160 cm
NET WEIGHT	43 kg
PACKAGING MODE	Support disassembled
STANDARD PACKAGING TYPE	Boxes on pallet
PACKAGING SIZE	A= 90 cm B = 45 cm C= 64 cm
GROSS WEIGHT	52 Kg

