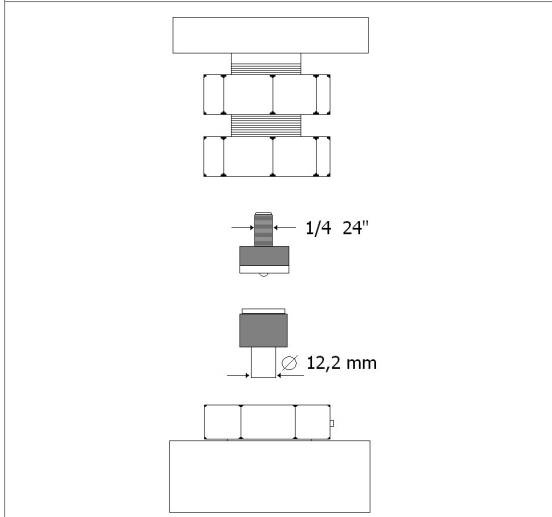


TECHNICAL SPECIFICATIONS OF TOOL HOLDERS



The dies (tools) for small parts can be purchased from the button supplier.

Possibility to have custom tool holders.

*a standard jeans button was taken as reference

The force required for the application is mentioned in the technical data sheet of the small parts.

PRODUCT DESCRIPTION

Bench pneumatic head with manual loading.

USE

Application of snap buttons, eyelets and small parts in general.
Piercing of fabrics, leather and plastic sheets.

TYPE OF START-UP

Pneumatic pedal

CYLINDER

ISO Ø 80 Stroke 50 mm

AIR CONSUMPTION PER CYCLE

1,75 N/l

CYLINDER FORCE

350 KN - 8bar

APPLICABLE SMALL PARTS SIZE*

Ø max 17 mm

WORKING PRESSURE

Adjustable 3÷8 bar

TYPE OF ADJUSTMENT

Pressure reducer with pressure gauge

PROCESSING TIME

3÷4 " per cycle

SAFETY

Adjustable hand protection system

STANDARD EQUIPMENT

1 double-ended wrench

OPTIONALS

- Red light led positioning device (dot or cross)
- Distance reference guide
- Suction kit

NUMBER OF OPERATORS PER MACHINE

1

CERTIFICATION

CE Labeling

WARRANTY DURATION

12 months

HEAD SIZE

18X34X47 cm

NET WEIGHT

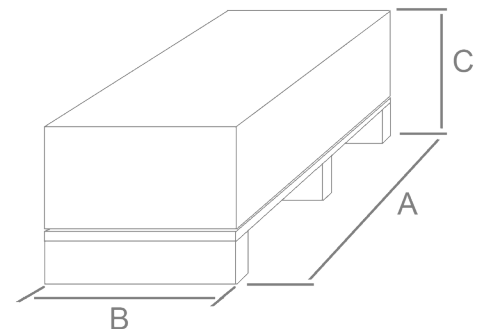
20 kg

STANDARD PACKAGING TYPE

Box on pallet

PACKAGING SIZE

A= 60 cm B = 40 cm C= 38 cm



GROSS WEIGHT

25 kg

