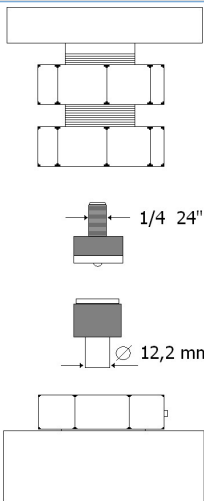


TECHNICAL SPECIFICATIONS OF TOOL HOLDERS



The dies (tools) for small parts can be purchased from the button supplier.

Possibility to have custom tool holders.

*a standard jeans button was taken as reference

The force required for the application is mentioned in the technical data sheet of the small parts.

PRODUCT DESCRIPTION	Bench lever press
USE	Application of snap buttons, eyelets and small parts in general. Piercing of fabrics, leather and plastic sheets.
TYPE OF DRIVE	Manual lever
STROKE	25 mm
MAX FORCE	500 kg
APPLICABLE SMALL PARTS SIZE*	Ø max 17 mm
PROCESSING TIME	3÷4 " per cycle
STANDARD EQUIPMENT	4 fixing screws
WARRANTY DURATION	12 months
SIZES	L10xP30xH43 cm
NET WEIGHT	8 kg
STANDARD PACKAGING TYPE	Box
PACKAGING SIZE	A= 40 cm B = 31 cm C= 16 cm
GROSS WEIGHT	8.65 Kg

