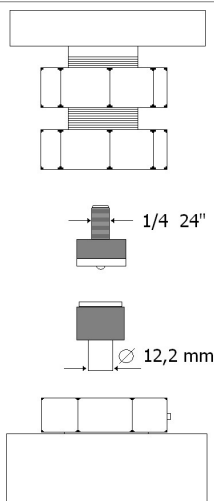


TECHNICAL SPECIFICATIONS OF TOOL HOLDERS



The dies (tools) for small parts can be purchased from the button supplier.

Possibility to have custom tool holders.

*a standard jeans button was taken as reference

The force required for the application is mentioned in the technical data sheet of the small parts.

PRODUCT DESCRIPTION

Bench lever press

USE

Application of snap buttons, eyelets and small parts in general.
Piercing of fabrics, leather and plastic sheets.

TYPE OF DRIVE

Manual lever

STROKE

25 mm

MAX FORCE

500 kg

APPLICABLE SMALL PARTS SIZE*

Ø max 17 mm

PROCESSING TIME

3÷4 " per cycle

STANDARD EQUIPMENT

4 fixing screws

WARRANTY DURATION

12 months

SIZES

L10xP35xH43 cm

NET WEIGHT

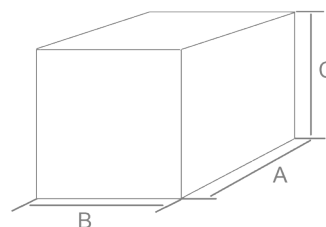
12.9 kg

STANDARD PACKAGING TYPE

Box

PACKAGING SIZE

A= 41 cm B = 41 cm C= 20 cm



GROSS WEIGHT

13.7 Kg